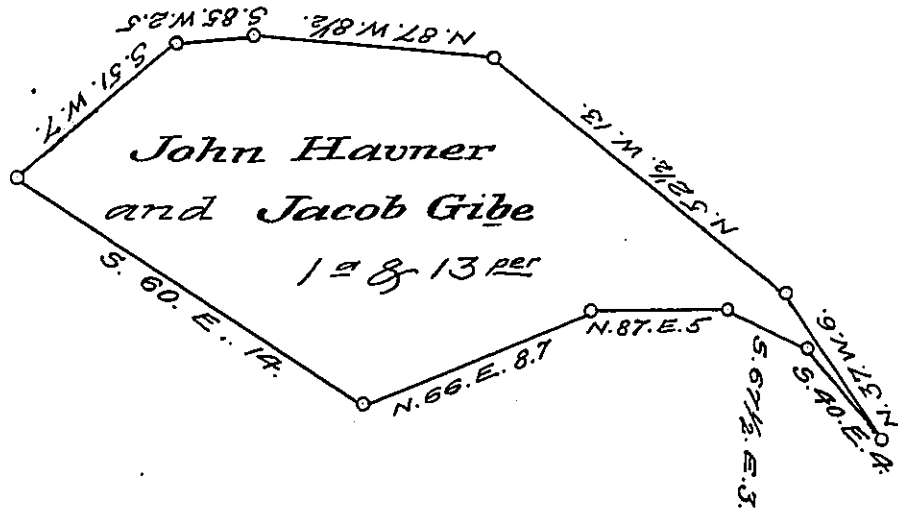


York County Shore

Lancaster County Shore



A Draught of Birch Island situate in the river Susquehanna in Manor township Lancaster County on the Lancaster side opposite Kindicks run and on the York side opposite the Green branch run and land of Krelly & Musser lying near the middle of the river Containing one acre and thirteen perches Strict Measure surveyed in pursuance of a warrant dated the 2nd day of August A.D. 1815 granted to John Havner and Jacob Gibe

p^c Jacob Hibstman D.S.

To Jacob Spangler Esq^r }
 Surveyor General. }

IN TESTIMONY that the above is a copy of the original remaining on file in the Department of Internal Affairs of Pennsylvania, made conformably to an Act of Assembly approved the 16th day of February 1833, I have hereunto set my hand and caused the Seal of said Department to be affixed at Harrisburg, this thirteenth day of January 1908.

Henry Howell
 Secretary of Internal Affairs.